

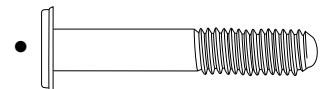


Chevrolet Service Desk

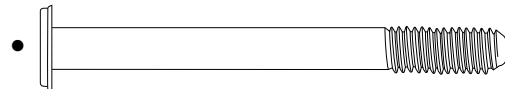
TOOLS REQUIRED:

- Phillips screwdriver
- Open end wrench set or adjustable crescent wrench
- Allen wrench (supplied)
- Compact drill and 3/8" drill bit
- Level

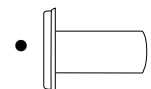
HARDWARE:



• 1/4-20 x 1-3/8" connector bolt
(to connect file cabinet to curved section)



• 1/4-20 x 2-3/8" connector bolt
(to connect any unit to main podium)

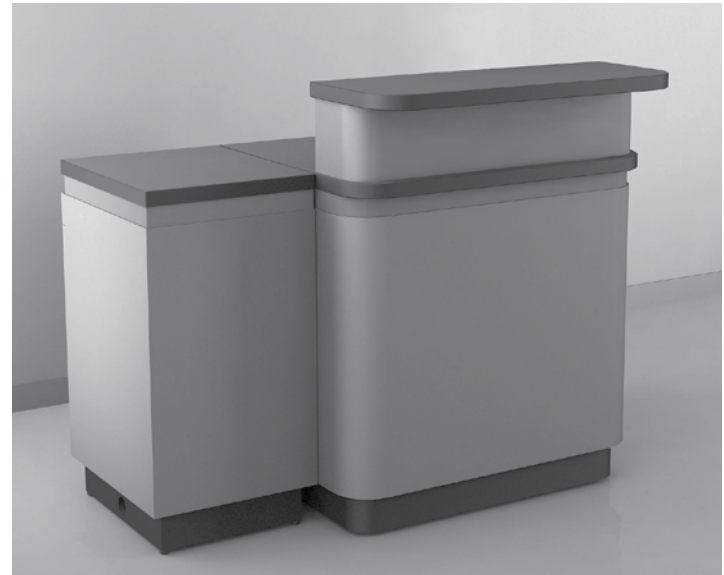


• Connector nut

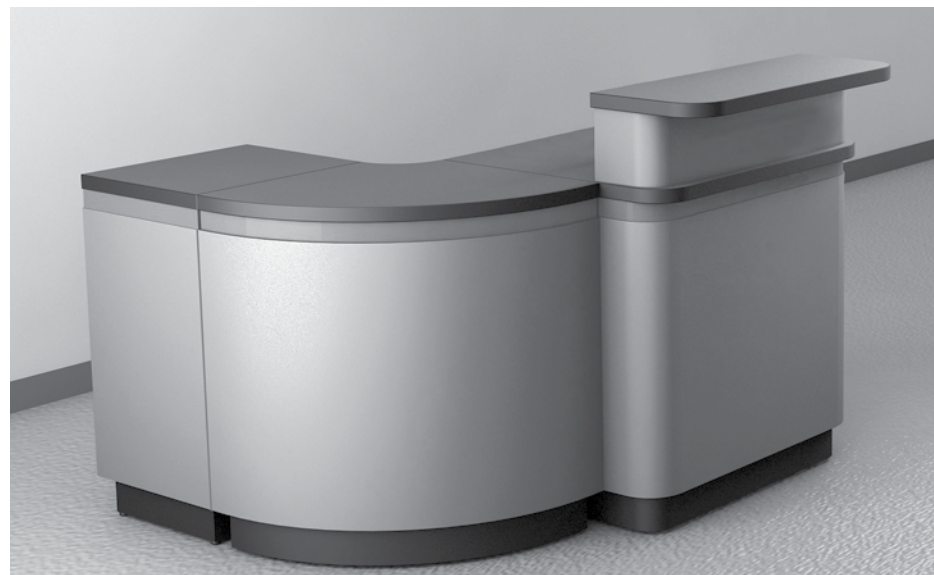
NOTE: This modular system is designed so that it can be arranged in various ways to accommodate each dealership. The following are just a few examples.



Main Podium



Main Podium and File Cabinet



Main Podium, Curved Section and File Cabinet

INSTRUCTIONS

1. Place units in desired location. Adjust leg levelers as needed.
2. To secure the various units together, find a four hole pattern located inside the vertical walls of each cabinet.
 - Main podium has pilot holes, four on each side. Drill only as needed.
 - Curved corner unit has through holes. Remove the panel to access the holes. Replace panel when finished.
 - The file cabinet has pilot holes, four on each side. Remove drawers to access holes. Drill only as needed.
3. Use a 3/8 drill bit to drill through the pilot holes only where a connection is needed.
4. Use four connector bolts to secure each unit to the next. Two bolt sizes are included. See notes in hardware section.

Call DCI Marketing at 800-766-5660 with any questions.